

Five forest rounds

music by Emily Doolittle

words by Emily Doolittle, Neil Banas, and Sheena Phillips

1. Turtle

$\text{♩} = 40$ *gentle*



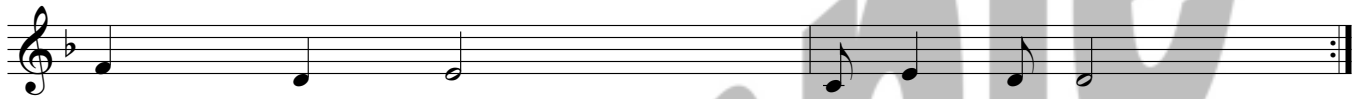
Tur - tle swim - ming in the bank - side shal - lows,

2.



Turn - ing and gli - ding in the stream,

3.



Soft and slow, as in a dream.

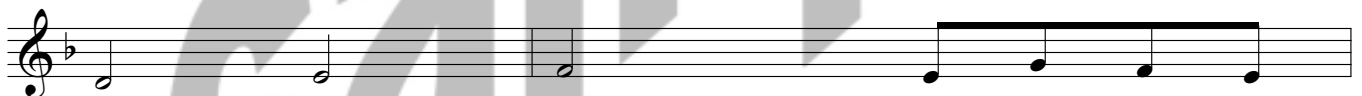
2. Fox

Voices can come in 4, 2, or 1 measures apart. A recommended arrangement is for new voices to come in closer and closer together as the round progresses.

$\text{♩} = 63$ *gentle*



Fox prowls low, look - ing wi - ly,



Fox prowls slow, step - ping shy - ly,



Fox howls loud, and calls her cubs to come out hunt - ing,



Fox howls high, and sniffs the eve - ning sky.

3. Beavers

$\bullet = 80$

1. **2.**
Bea - vers hide in the cat - tails, Slip - ping and sli - ding through the ri - ver,

3.
Slap - ping the wa - ter with flat tails.

Detailed description: The musical score for 'Beavers' is written on a single treble clef staff in G major (one sharp) and 10/8 time. It consists of three lines of music. The first line is marked with a tempo of quarter note = 80. It begins with a treble clef, a key signature of one sharp (F#), and a 10/8 time signature. The melody consists of eighth and quarter notes. The lyrics are 'Bea - vers hide in the cat - tails, Slip - ping and sli - ding through the ri - ver,'. The second line continues the melody with the lyrics 'Slap - ping the wa - ter with flat tails.' and ends with a double bar line and repeat dots. A large, faint 'sample' watermark is visible across the page.

4. Bat

Start slowly, then gradually get faster and faster until you can no longer continue

1. **2.**
Hang tight, black bat, fold your wings and keep your eyes shut.

Lis - ten in the rust - ling dark - ness for your din - ner.

3. **4.**
Then swoop up, dart down, fly loop - ing by. Sha - dow in the sky.

Detailed description: The musical score for 'Bat' is written on a single treble clef staff in G major (one sharp) and 4/4 time. It consists of four lines of music. The first line is marked with the instruction 'Start slowly, then gradually get faster and faster until you can no longer continue'. It begins with a treble clef, a key signature of one sharp (F#), and a 4/4 time signature. The melody consists of quarter notes. The lyrics are 'Hang tight, black bat, fold your wings and keep your eyes shut.' The second line continues the melody with the lyrics 'Lis - ten in the rust - ling dark - ness for your din - ner.' The third line continues with the lyrics 'Then swoop up, dart down, fly loop - ing by. Sha - dow in the sky.' and ends with a double bar line and repeat dots. A large, faint 'sample' watermark is visible across the page.

5. Bear's Lullaby

$\circ = 48$

1. **2.**
Sun low and branch - es bare, Geese call through frost - y air,

3. **4.**
Sleep now in your den, Till spring - time comes a - gain.

Detailed description: The musical score for 'Bear's Lullaby' is written on a single treble clef staff in G major (one sharp) and 3/2 time. It consists of four lines of music. The first line is marked with a tempo of half note = 48. It begins with a treble clef, a key signature of one sharp (F#), and a 3/2 time signature. The melody consists of quarter and half notes. The lyrics are 'Sun low and branch - es bare, Geese call through frost - y air,'. The second line continues the melody with the lyrics 'Sleep now in your den, Till spring - time comes a - gain.' and ends with a double bar line and repeat dots. A large, faint 'sample' watermark is visible across the page.