

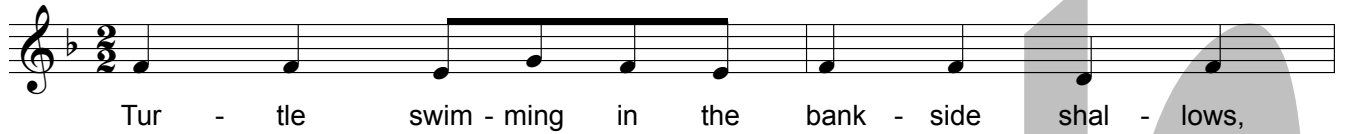
Five animal rounds

music by Emily Doolittle

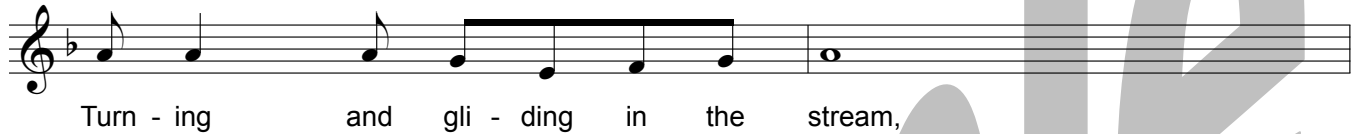
words by Emily Doolittle, Neil Banas, and Sheena Phillips

1. Turtle

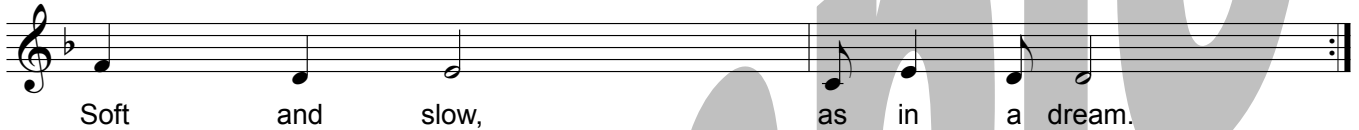
$\text{♩} = 40$ *gentle*



2.



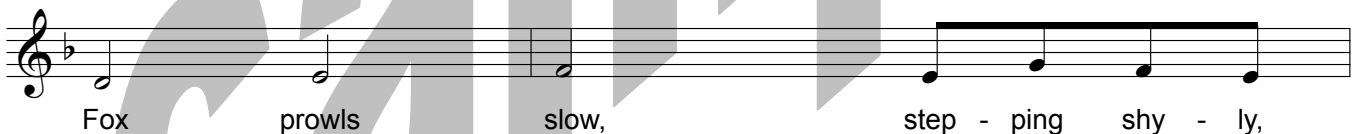
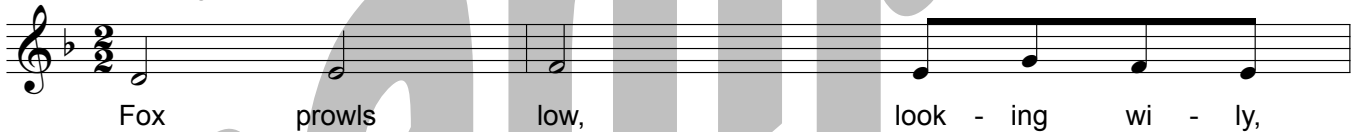
3.



2. Fox

Voices can come in 4, 2, or 1 measures apart. A recommended arrangement is for new voices to come in closer and closer together as the round progresses.

$\text{♩} = 63$ *gentle*



3. Beavers

$\bullet = 80$

2.

Bea - vers hide in the cat - tails, Slip - ping and sli - ding through the ri - ver,

3.

Slap - ping the wa - ter with flat tails.

Detailed description: The first line of music is in treble clef, key of D major (two sharps), and 10/8 time. It contains two measures of music. The second line of music is also in treble clef, key of D major, and 10/8 time, containing one measure of music. The lyrics are written below the notes.

4. Bat

Start slowly, then gradually get faster and faster until you can no longer continue

Hang tight, black bat, fold your wings and keep your eyes shut.

2.

Lis - ten in the rust - ling dark - ness for your din - ner.

3.

Then swoop up, dart down, fly loop - ing by. Sha - dow in the sky.

Detailed description: The first line of music is in treble clef, key of D major (two sharps), and 4/4 time. It contains one measure of music. The second line of music is also in treble clef, key of D major, and 4/4 time, containing one measure of music. The third line of music is also in treble clef, key of D major, and 4/4 time, containing one measure of music. The lyrics are written below the notes.

5. Bear's Lullaby

$\circ = 48$

2.

Sun low and branch - es bare, Geese call through frost - y air,

3.

Sleep now in your den,

4.

Till spring - time comes a - gain.

Detailed description: The first line of music is in treble clef, key of D major (two sharps), and 3/2 time. It contains two measures of music. The second line of music is also in treble clef, key of D major, and 3/2 time, containing one measure of music. The third line of music is also in treble clef, key of D major, and 3/2 time, containing one measure of music. The fourth line of music is also in treble clef, key of D major, and 3/2 time, containing one measure of music. The lyrics are written below the notes.